

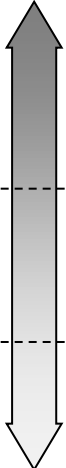
# General Public License v2 (GPL) Analysis

GNU software = "Program"

GPL does not apply to activities other than:

- Copying
- Distributing
- Modifying

GPL



No GPL

Programs compiled together (same executable)

Static linking (shared address)

Dynamic linking  
• fork / exec  
• function calls  
• data structures

Separate programs  
• compiler/kernel  
• editor/shell  
• pipes/sockets/  
command lines

gray area

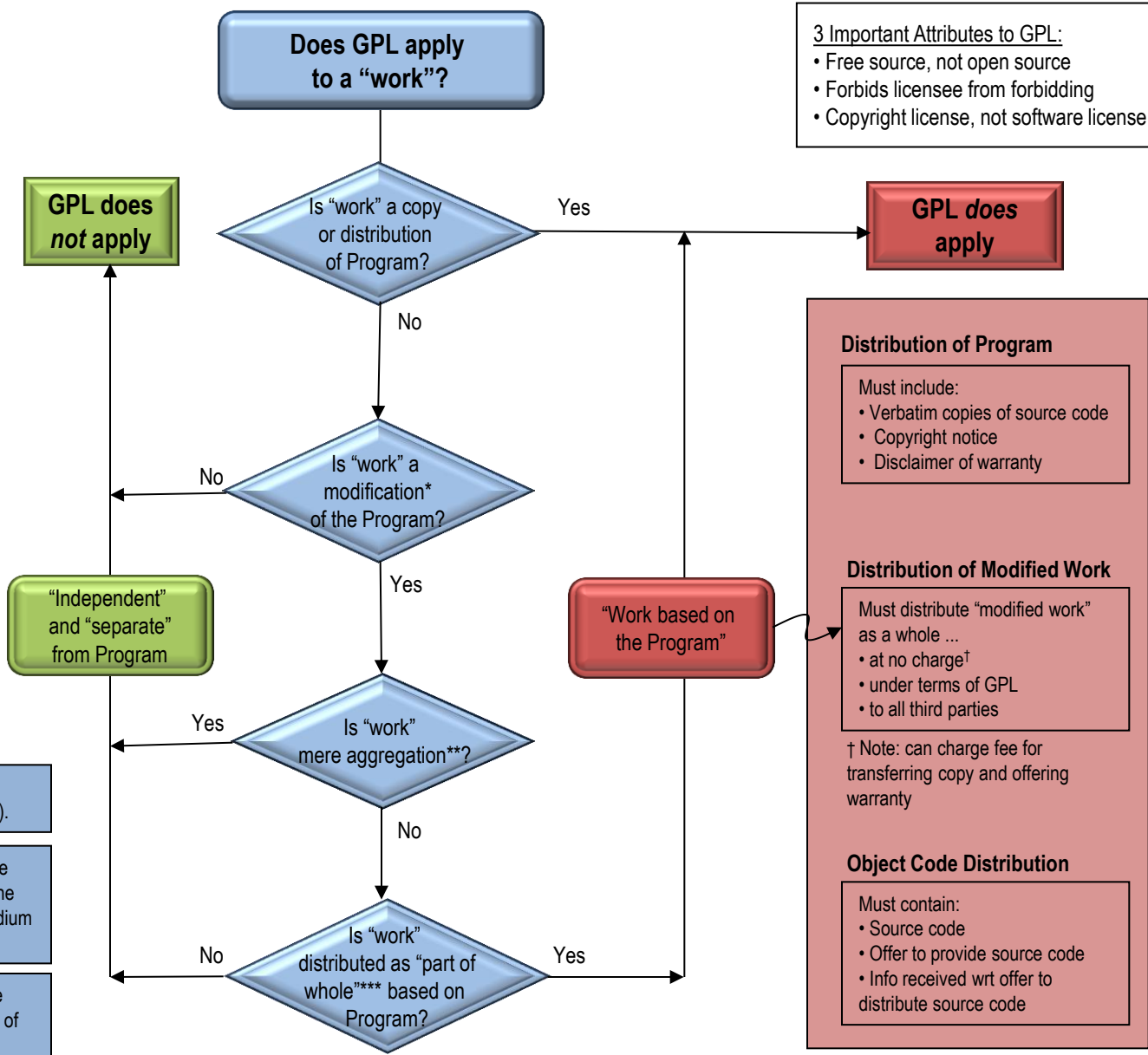
\* A "modification" includes a "derivative work of the Program" (§0) or "collective work of the Program" (§2).

\*\* "Mere aggregation of another work not based on the Program with the Program (or with a work based on the Program) on a volume of a storage or distribution medium does not bring the other work under... GPL." (§2).

\*\*\* If distribution of same sections as part of the whole which is a work based on a program, then distribution of the whole must on the terms of the GPL license (§2).

3 Important Attributes to GPL:

- Free source, not open source
- Forbids licensee from forbidding
- Copyright license, not software license



## Distribution of Program

Must include:

- Verbatim copies of source code
- Copyright notice
- Disclaimer of warranty

## Distribution of Modified Work

Must distribute "modified work" as a whole ...

- at no charge<sup>†</sup>
- under terms of GPL
- to all third parties

<sup>†</sup> Note: can charge fee for transferring copy and offering warranty

## Object Code Distribution

Must contain:

- Source code
- Offer to provide source code
- Info received wrt offer to distribute source code